



NHPC
NACHTIGAL HYDRO POWER COMPANY

FLASH INFO

Nachtigal, an efficient and responsible hydroelectric company in Cameroon

NUMBER 243

NHPC NEWSLETTER

7 AUGUST 2025

NHPC and COTCO: an exemplary collaboration for the public interest

Committed to safe infrastructures cohabitation

On the 5th of August 2025, during a ceremony in Douala, NHPC and COTCO signed the handover protocol of the monitoring unit's equipment for the Nachtigal 2x225kv High Voltage line's impacts on the Chad-Cameroon pipeline.

This signing marks the achievement of a fruitful collaboration between the two entities that started in 2015. It follows the completion in 2023 of an impact study on the crossing of the two infrastructures, which concluded on the absence of any corrosion or safety risk induced by the electric line's field on the pipeline, but recommended the implementation of a continuous monitoring and control system.

Financed by NHPC, this system, which includes several installations and equipment, was installed in 2023 to collect data over several months. The return of the data in April 2025 confirmed the conclusions of the study: no impact on the environment.

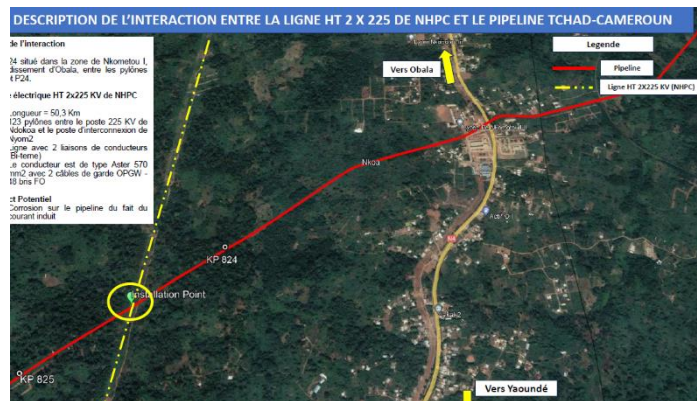
It was therefore decided to hand the monitoring system back to COTCO to be used for future needs.

Successful synergy for the public interest

The success of this long-term collaboration between NHPC and COTCO reflects both companies' shared commitment to proactive, rigorous and collaborative management of their assets. It contributes fully to the reliability and security of major national infrastructures, at Cameroon's energy and economic development service.



COTCO Managing Director and NHPC Deputy Managing Director exchanging initials



Overview of the section of the Chad-Cameroon pipeline crossed by the Nachtigal 2x225 KV high-voltage line



The Nachtigal 2X225KV HV transmission line

NACHTIGAL HYDRO POWER COMPANY (NHPC)

1067 Bis, Rue 1750-Nouvelle Route de Bastos, Yaoundé | Boite Postale 35543
infos@nhpc.cm | Tél : (237) 680 85 28 36 | www.nhpc.cm